

Notices to Mariners, SWEDEN Swedish Maritime Administration



Areas in Swedish Notices to Mariners



SJÖFARTSVERKET

Editorial office
Swedish Maritime Administration
Ufs
601 78 NORRKÖPING
Sweden
tel: 0771 630 605
e-mail: ufs@sjofartsverket.se
Publisher:
Hydrographer Patrik Wiberg

ANNOUNCEMENTS

* 12792 (T)

Recommendations for maritime traffic near land and in archipelagos under ice conditions in order to avoid accidents to persons on the ice. New method for reporting of broken ice.

Expired notices: 2017:678/12651(T)

Every winter there are accidents where people who use the sea ice for transportation or recreation are falling into the icy water or cannot reach shore because the ice has been broken. In some cases the ice has been broken by ships. In order to reduce the risk of such accidents, the following recommendations have been drafted by the Swedish Maritime Administration in cooperation with other authorities and organizations.

Follow fairways and pay attention

In ice covered waters shipping should, as far as possible, use fairways shown on charts or the unofficial fairways that are used by local passenger boats and islanders.

If you see people on the ice in vicinity of your planned route you should make sure that the ice is not broken up where they are or the channel through the ice is not making it impossible for the people to get to the shore.

Speed restrictions and prohibition to break the ice

In order to ensure that the ice is not broken and thus make it impossible to use for transportation, waters may be closed to navigation or speed restrictions may apply in certain places during winter. Decisions on such restrictions are notified in each case as a temporary notice in the Swedish NtM (Ufs).

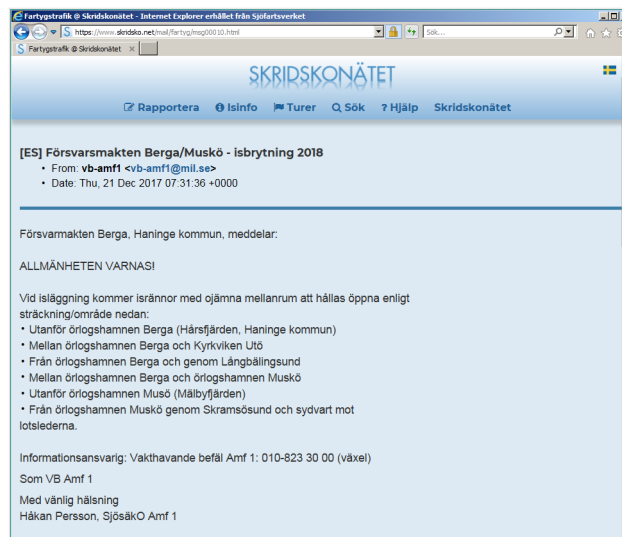
To be noted before breaking ice channels

A voyage in ice covered waters near shore and in archipelagos require extra good route planning. If possible, follow fairways as mentioned above or existing channels through the ice. Before breaking a new channel you should find out about local conditions and ensure that you are not cutting of the mainland connection for inhabited islands.

Inform about upcoming and already existing channels through the ice

NEW METHOD to inform about channels through the ice: Send an e-mail with information about the channel through the ice to fartyg@skridsko.net. The text in the e-mail will automatically be published on the website www.skridsko.net/mail/fartyg/ (see attached picture).

Ufs A 2016-2017, chapter 6.5



The webb page www.skridsko.net with reported channels through the ice

Sjöfartsverket, Norrköping. Publ. 18 januari 2018

NOTICES

Bay of Bothnia

* 12778 (T)

Chart: 41, 421

Sweden. Bay of Bothnia. E of Byske. Tåme. Gunnery exercises January 20 - 22, 2018.

Position: Approx.	64-55N	021-30E	Tåme Firing practice area
-------------------	--------	---------	---------------------------

Gunnery exercises will be carried out at Tåme Firing range during times listed below. During these times the charted danger area "R 58" is closed to navigation within stated distance from shore.

During firing a red balloon is shown from the observation towers. Further information on VHF channel 16, call Tåme skjutfält, or phone +46 921 348405 alt. +46 921 349100.

Day	Time	Range from shore
January 20	0830-1630 LT	2,7 M
January 21	0830-1630 LT	2,7 M
January 22	0900-1630 LT	2,7 M

Not shown in ENC.

Bsp Bottenviken 2014/s06, s37, s38, s39, s40, s41, s42, s44

Försvarsmakten, Tåme skjutfält. Publ. 18 januari 2018

Sea of Bothnia

* 12787

Chart: 5342

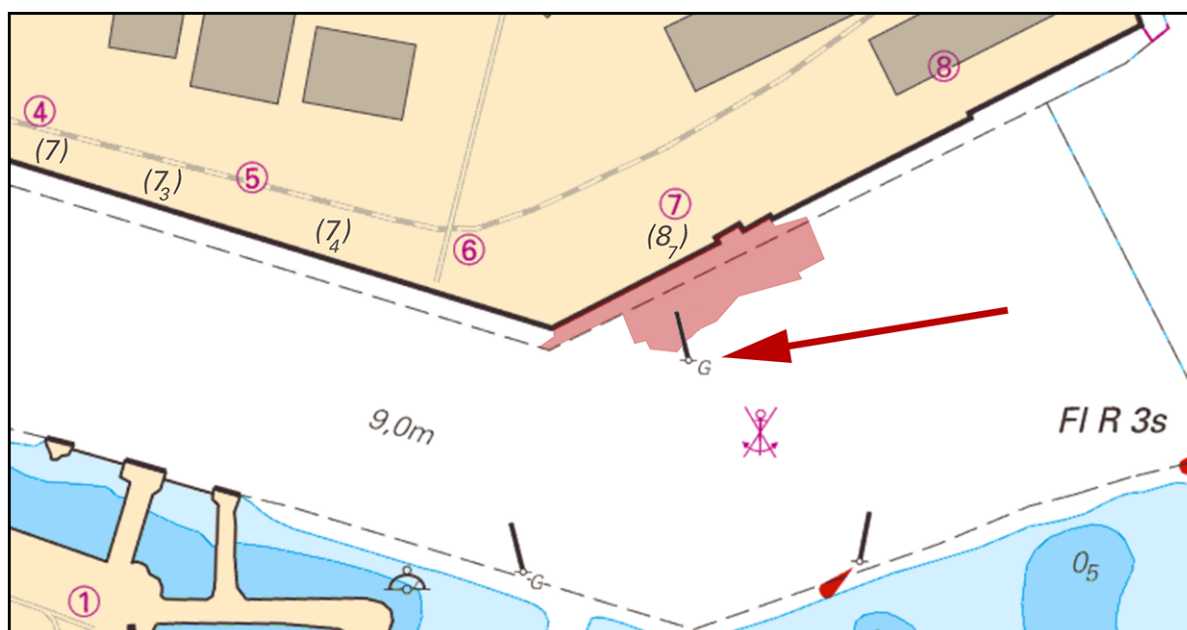
Sweden. Sea of Bothnia. Port of Gävle. Fredriksskans. Spar buoy off berth No 7 replaced.

Expired notices: 2017:682/12738

See: 2017:680/12701

Replace	special spar buoy with starboard hand spar buoy	60-41,355N	017-12,995E
----------------	---	------------	-------------

Bsp Bottenhavet S 2013/s39



Spar buoy off berth No 7 replaced

Gävle Hamn AB. Publ. 18 januari 2018

Northern Baltic

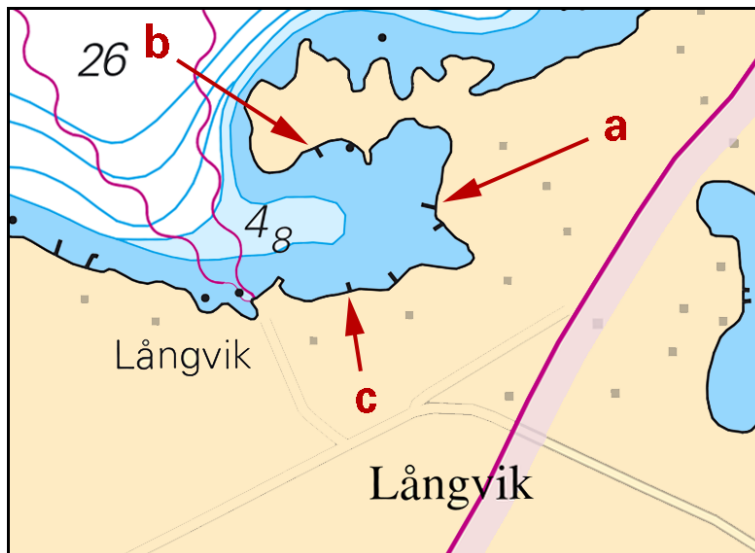
* 12772

Chart: 6143, 6144, 615

Sweden. Northern Baltic. Stockholm archipelago. Northern part of Runmarö. Långvik. Jetties.

Insert	jetties in a) - c)	a)	59-17,824N	018-46,479E
		b)	59-17,856N	018-46,356E
		c)	59-17,777N	018-46,390E

Bsp Stockholm M 2016/s24, s47



Långvik

Sjöfartsverket, Norrköping. Publ. 18 januari 2018

* 12774

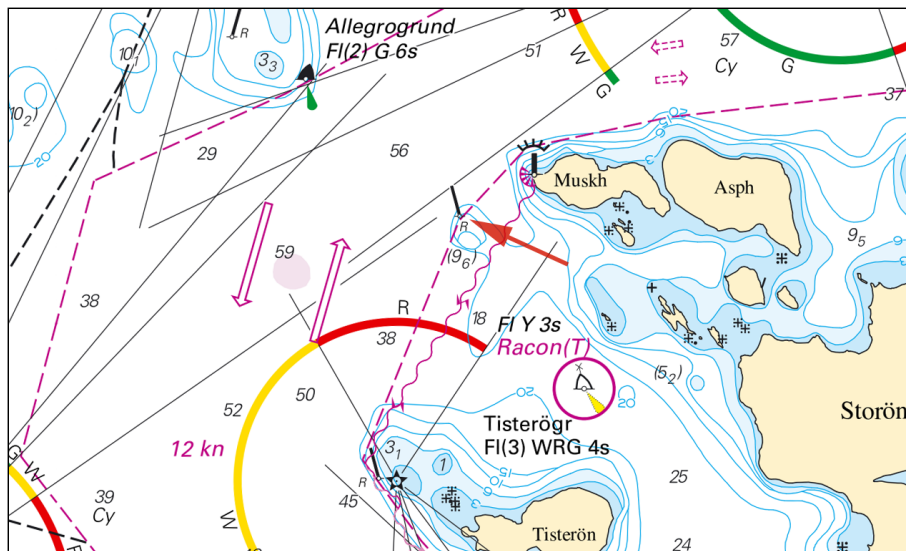
Chart: 612, 6142

Sweden. Northern Baltic. Stockholm archipelago. Trälhavet. Muskholmen. Move spar buoy.

Move	red spar buoy approx. 30 m W to	59-26,254N	018-23,684E
------	---------------------------------	------------	-------------

Note. The permanent movage of the spar buoy will be performed in the winter-spring of 2018.

Bsp Stockholm M 2016/s15, Bsp Stockholm N 2016/s38, s42



Muskholmen, spar buoy moved

Sjöfartsverket. Publ. 18 januari 2018

Central Baltic

* 12776 (T)

Chart: 6241

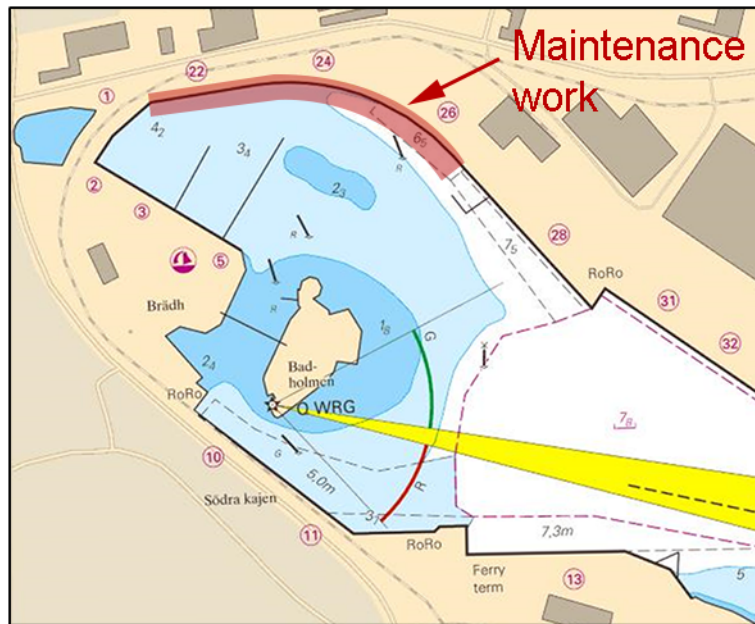
Sweden. Central Baltic. Oskarshamn. Inner harbour. Berth 22-26. Maintenance work.

Time: February 5 - April 1, 2018

Maintenance work on the northern quay, inner harbor in Oskarshamn in progress. Berth 22 - 26. The affected area is 4 m out from the quay.

Work area, Oskarshamn	57-16,05N	016-27,37E
-----------------------	-----------	------------

Bsp Kalmarsund 2014/s42, S43



Inner harbour, Oskarshamn

Oskarshamns kommun. Publ. 18 januari 2018

* 12777

Chart: 712, 713

Sweden. Central Baltic. Kalmar. Skansgrundet light. Amended sector limit.

See: 2017:647/12010

	Skansgrundet light	56-39,1N	016-22,5E
Amend	R-W sector limit from 201,0 till 202,2°		

Adm. LoL vol. C7390

Bsp Kalmarsund 2014/s26, s35, s38

Sjöfartsverket. Publ. 12 januari 2018

South-Eastern Baltic

* 12733

Chart: 7, 83

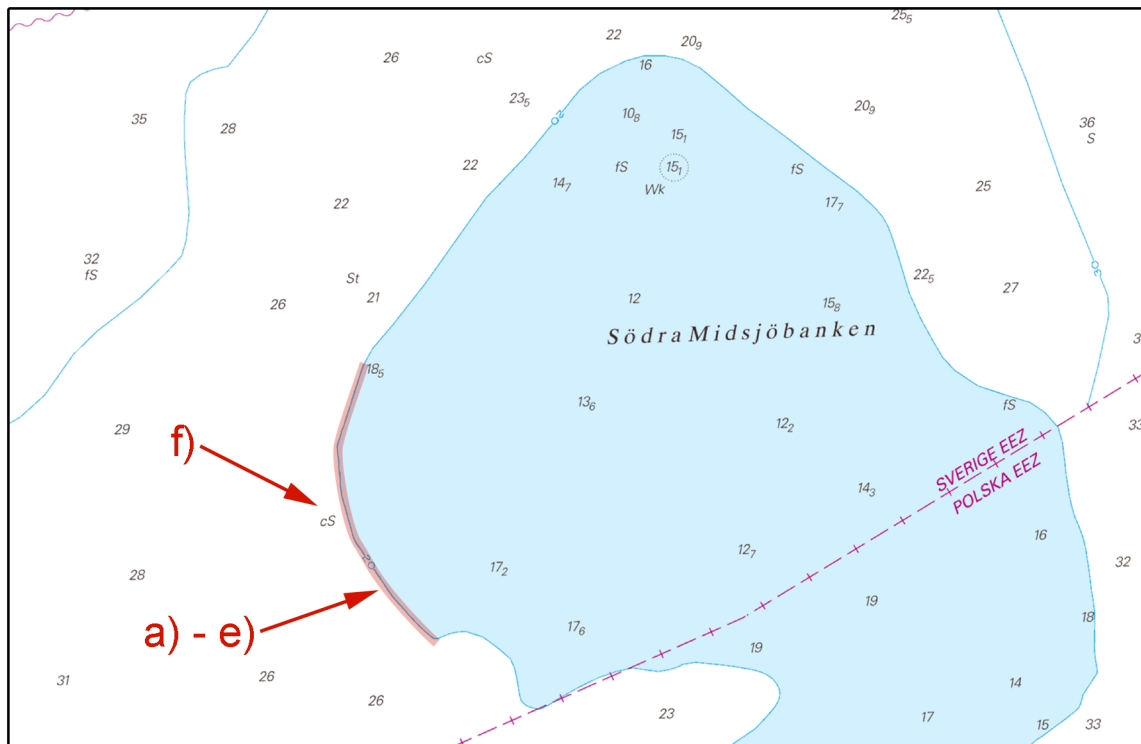
Sweden. South-Eastern Baltic. Södra Midsjöbanken. Amendments to depths.

A hydrographic survey has shown other depths than charted.

Important amendments are shown below.

Changes are available as an ENC update.

Amend	20 m depth contour between a) - e)	a)	55-39,4N	017-12,3E
		b)	55-38,1N	017-11,6E
		c)	55-36,7N	017-12,0E
		d)	55-36,0N	017-12,7E
		e)	55-35,1N	017-14,0E
Delete	depth 23 m	f)	55-37,2N	017-11,2E



Södra Midsjöbanken

Sjöfartsverket, Norrköping. Publ. 18 januari 2018

* 12785 (T)

Chart: 74, 83

Sweden. South-Eastern Baltic. NW of Norra Midsjöbanken. Measuring equipment.

Expired notices: 2017:634/11824(T)

Time: Until further notice.

Measuring equipment has been deployed on the seabed.

Anchoring and trawling in the area is to be avoided.

Measuring equipment on the sea floor, approx. pos.	56-13N	017-16E
--	--------	---------

Sjöfartsverket, Norrköping. Publ. 18 januari 2018

Southern Baltic

* 12763

Chart: 742

Sweden. Southern Baltic. E of Karlshamn. NE of Tärnö. Boköfjorden. Fish farm.

Insert	marine farm	56-09,26N	015-00,03E
--------	-------------	-----------	------------

Bsp Hanöbukten 2014/s21

